

# SILAGE BASED ENTERPRISE WITH SOCIAL IMPACT

BY  
GANGPUR VENTURES  
OPC PRIVATE LIMITED



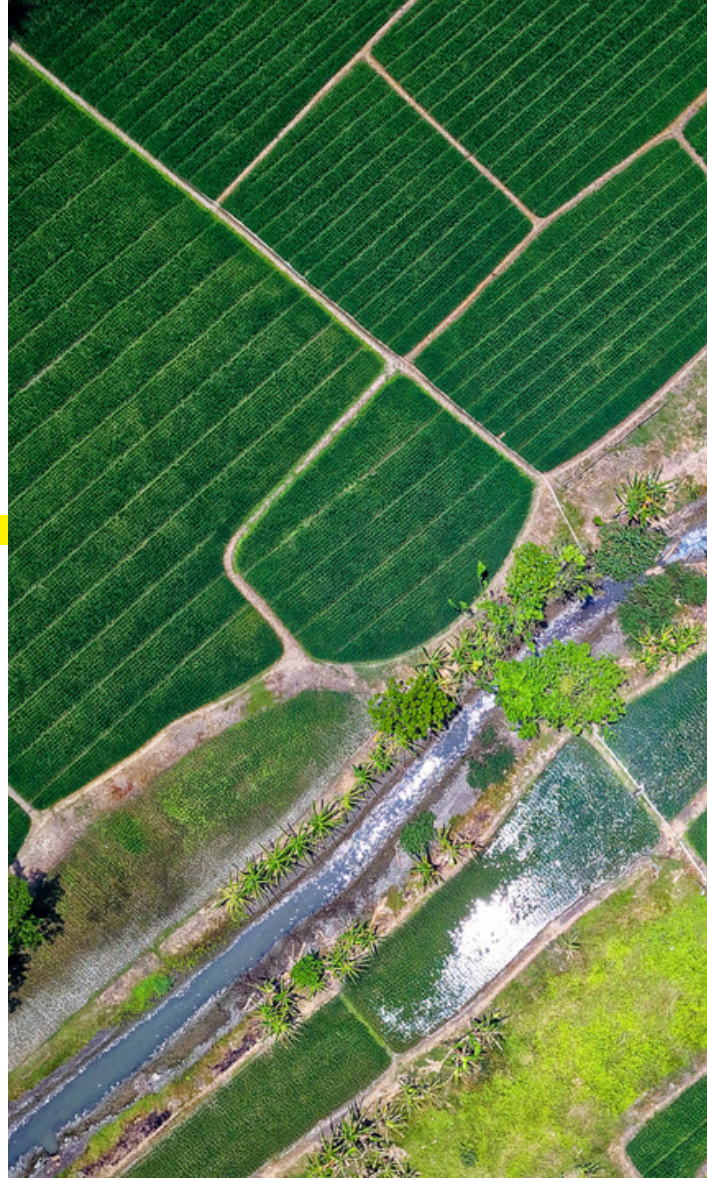
# ABOUT US

## GANGPUR VENTURES

Gangpur Ventures was started by a group of agri enthusiasts in the year 2021 who have committed themselves to the cause of tribal communities in the entire Chotanagpur region. We have set out on a mission to transform the tribal agricultural practices into more remunerative and sustainable occupation by introducing modern and innovative practices.

We have adopted Corn Silage based intervention which solves the dual purpose of solving fodder scarcity in the animal husbandry space as well as commercialise agriculture for rural communities. This intervention has been tried by us since 2014 and has enormously benefitted the rural farmers.

We are presently operating in the Sundargarh district of Odisha and are focused at expanding our interventions to other tribal populated regions in the Chotanagpur region.



## Promoter

### **Bimal Lakra**

Director

MBA & MA Public Administration.

14 years of experience in social development. Has keen interest in grass roots developmental activities and has extensively worked in the fields of livelihoods, skill development, youth & women empowerment.



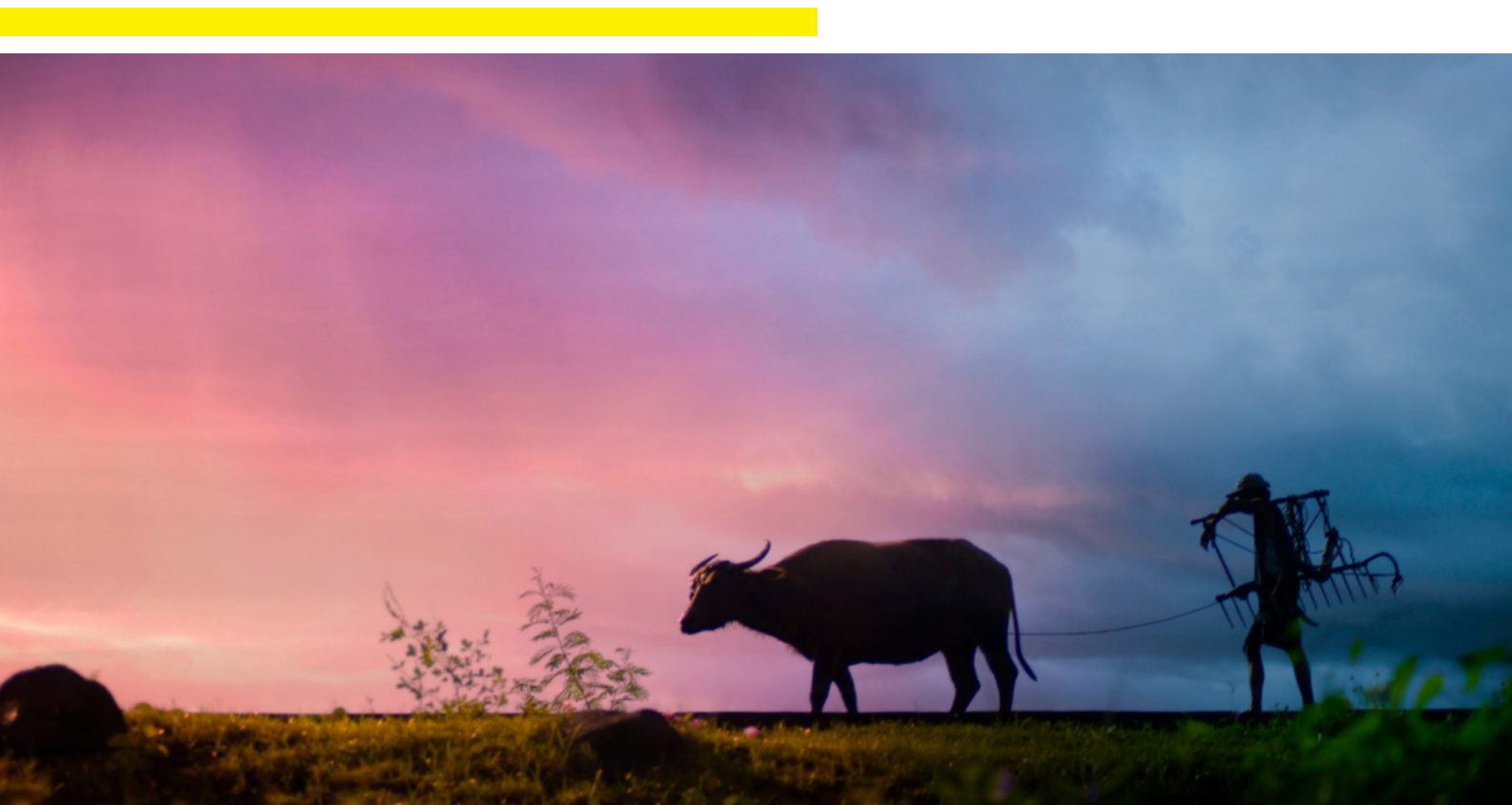
## TRIBAL AGRICULTURE

- 1. Agriculture is no longer remunerative for the farmers of Chotanagpur.
- Migration from villages in this region is at a rise.
- Access to markets is always an impeding challenge.
- Adoption of best and sustainable agricultural practices are lacking.
- 5. Monocropping and minimal cash crop cultivation yields lesser income.
- Lack of access to fair markets for agricultural commodities.

## FODDER CRISIS IN INDIA

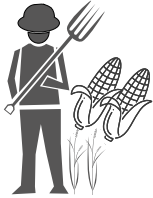
- As per ICAR report green fodder deficit in the country is at present 26% and is estimated to rise to 40% by the year 2025.
- India is the largest milk producer in the world, however, the per cow average milk yield is globally ranked below 25th.
- About 14-17% of land should be devoted to raising fodder, whereas, only 4% is currently under fodder cultivation in India. 4.87% of India's dairy farmers are in small & marginal category and most of them don't own a land to grow their own fodder.

# THE PROBLEM STATEMENT

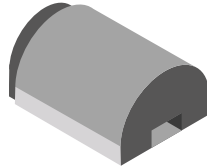


# OUR SOLUTION

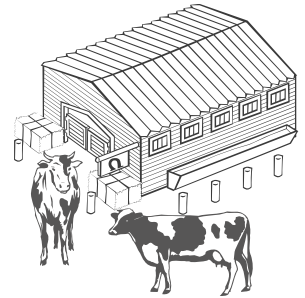
## SILAGE BASED LIVELIHOOD INTERVENTION



Beneficiary  
Farmers  
Cultivate  
Maize Crop



Maize Crop is  
Processed to  
Prepare Corn  
Silage at FPO Level



Silage is Supplied  
to Dairy Industry in  
the Region

### IMPACT ON FARMERS

- Beneficiary farmers are organised into Farmers Producer Organisation (FPO) and leverage on the potential of **"Collective Entrepreneurship"**
- Farmers undertake cultivation of **cash crops** namely maize.
- Farmers adopt scientifically designed **package of practice** to ensure maximised production.
- Farmlands of farmers are converted into **Smart Farms** by use of AgTech to ensure high levels of efficiency.
- Farmers have **assured market** for their crop based on the quality parameters.
- **Income enhancement** for farmers by 2-3 times than present
- status. **Multi faceted approach** for well being of farmers can be implanted on the platform of FPO.

### IMPACT ON DAIRY SECTOR

- The dairy industry of eastern India benefits by **local availability of fodder** which is otherwise procured from south or north India.
- Substantial **input cost reduction** for the local dairy industry.
- **Year round** availability of quality fodder.
- Enhancement in **quality and milk yield** of milch animals adds to the profit of dairy farmers.
- Compost from the dairy farms can be linked with fodder cultivating farmers on a large scale to facilitate and encourage **organic farming**.

Silage is a type of fodder made from green foliage crops which have been preserved by fermentation.



# ECONOMIC IMPACT

The intervention mainly aims at creating a positive economic impact on the beneficiary farmers by enhancing their income through a remunerative agricultural practice of producing corn based silage.

<b>Commodity</b>	<b>Cultivation Cost (Rs)</b>	<b>Harvest Duration (days)</b>	<b>Production Quantity (quintal)</b>	<b>Market Price (Rs)</b>	<b>Gross Income (Rs)</b>	<b>Net Profit (Rs)</b>
<b>Rice</b>	16,000/-	120	14	12/Kg	16,800/-	800/-
<b>Corn Seed</b>	30,000/-	150	25	16/Kg	40,000/-	10,000/-
<b>Silage</b>	26,000/-	90	200	2.20/Kg	44,000/-	18,000/-

Comparison of earning by farmer through silage and other commodities on one acre of land.



# SUCCESS STORIES

**Suman Lakra**, 30 years old, is an energetic and progressive producer of Silage in Sundargarh district of Odisha.



**Early Life** - For his basic livelihood, he migrated to Delhi and joined as an office boy in a call center, where he was earning Rs. 9,500/- per month, which was not sufficient for him to live a decent life in the metro city.

**Turning Point** - The turning point of his life was, when he came to know about maize silage production during his Christmas vacation visit to his own village. He underwent an orientation about maize farming led silage program, He joined hands with other farmers for farming in the same year by aggregating a land size of 6 Acres (3.5 Acre own and 2.5 on share).

**Major Achievements** - In the debut season, he achieved a profitable figure of Rs. 1.65 Lakhs through maize silage intervention. To generate additional income, he purchased a tractor by taking loan from bank. In the second year he bought a two wheeler to manage his family and personal affair which made him socially renowned in his village. Also he is educating his wife and now his wife is pursuing a B.E.D course. Now he has his own concrete house which he built by taking advantage from Indira Awaas Yojana and by adding from his savings.

**Sustainable Income Source** - Apart from cultivation he is earning a handsome income around 2 lakh per annum from tractor rental.

**Reverse Migration** - Suman is a reverse migrant in his village and he is now inspiring his friends to come back to village and join hands with him in farming sector.

**Vision** - With strong determination, Suman says that he wants to increase his farming outreach to 10 Acres in upcoming seasons and will mobilize his neighbors to achieve a cultivation area of 100 Acres. He is dreaming to establish a silage processing unit of own with support of his villagers.



### **Corporate Office**



1st Floor, Plot No- W-4/12  
Civil Township,  
Rourkela-769004  
District- Sundargarh, Odisha, India.

### **Contact Us**



Office 0661 - 3552997



Mobile 9861369093



[gangpurventures@gmail.com](mailto:gangpurventures@gmail.com)